

H

G

F

E

D

C

B

A

H

G

F

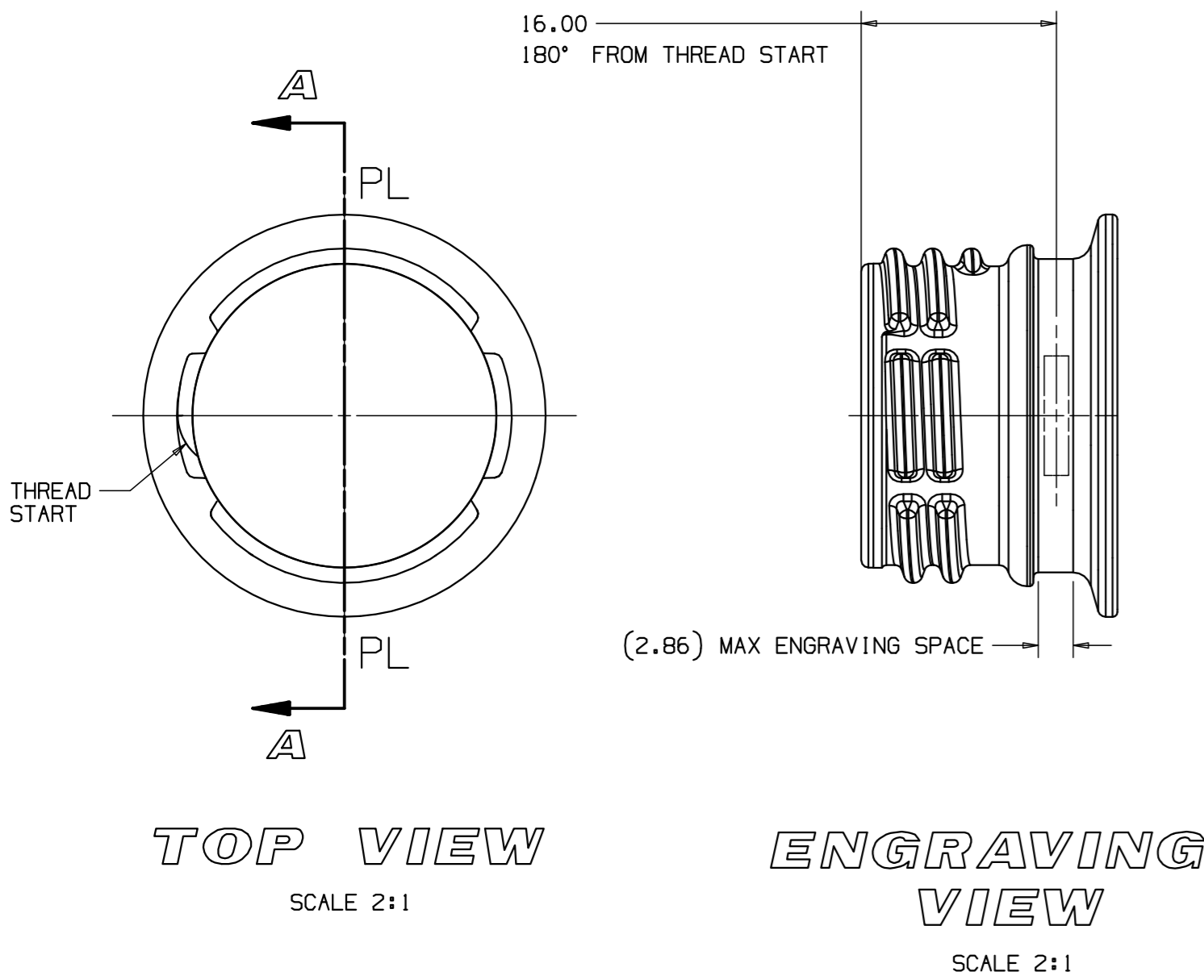
E

D

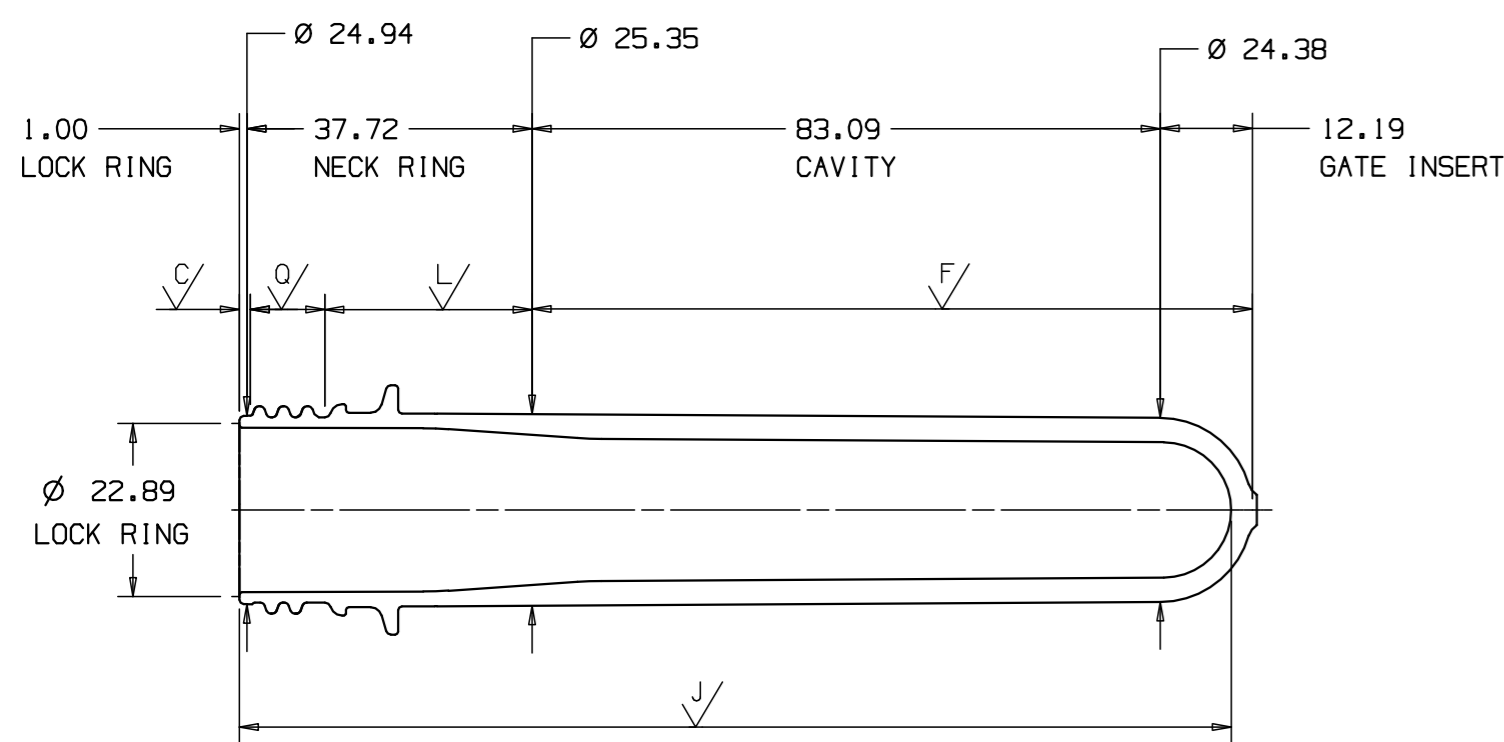
C

B

A



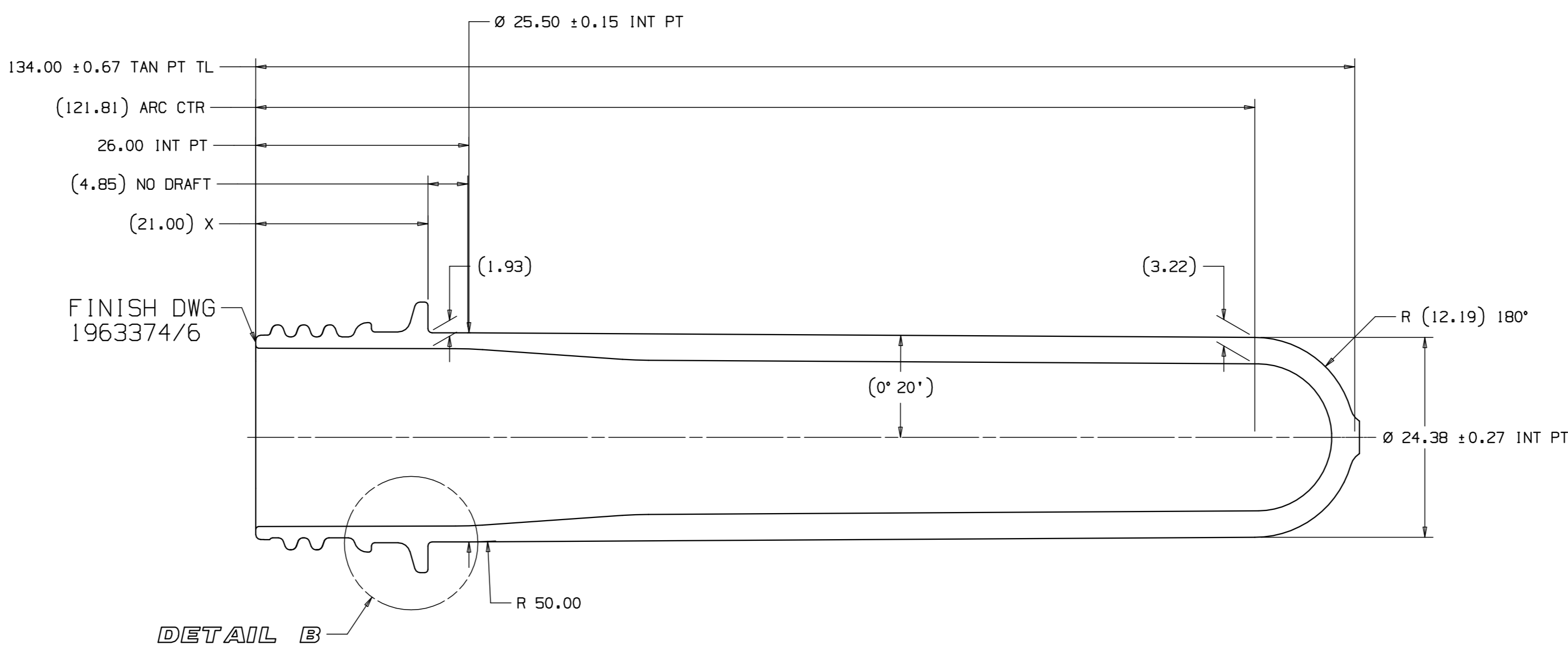
CAVITY SIDE



CORE SIDE

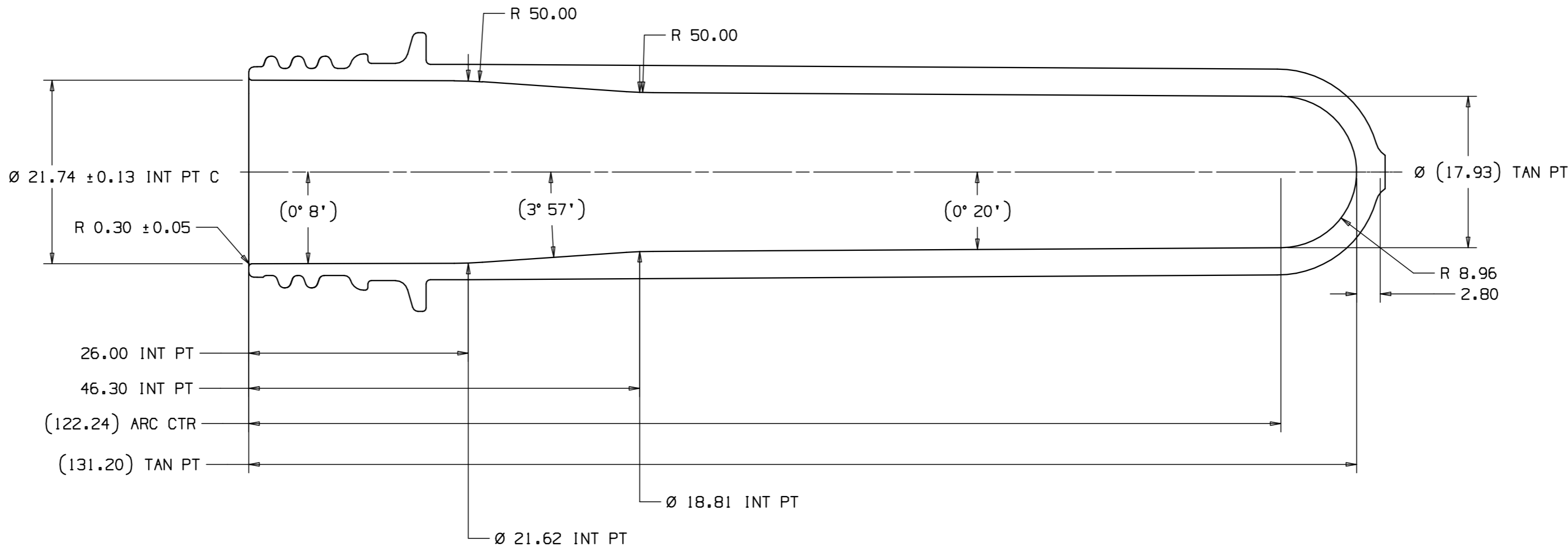
SECTION A'A
SURFACE FINISHES
AND SPLITLINES

SCALE 1:1



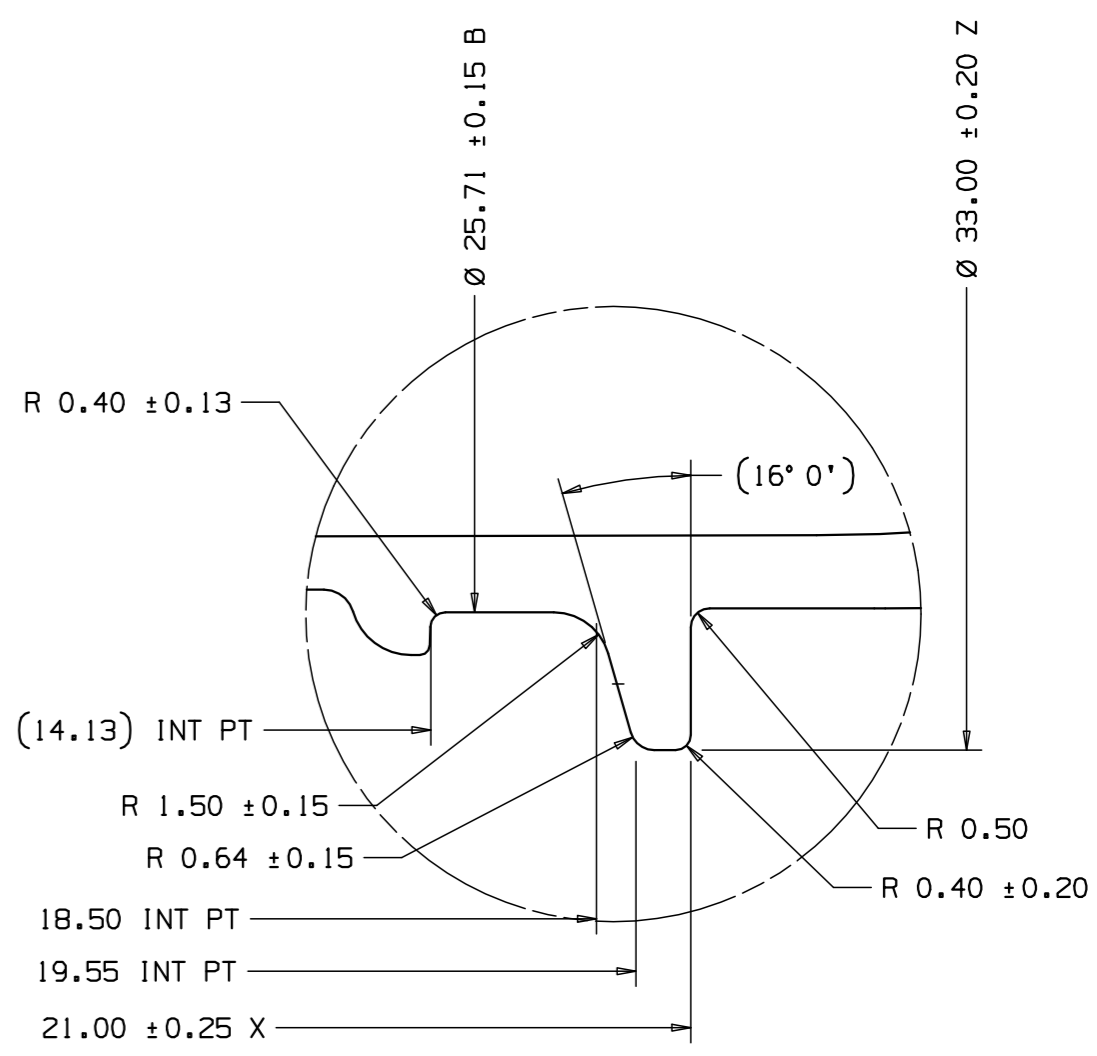
SECTION A'A
CAVITY SIDE DIMENSIONS

SCALE 2:1



SECTION A'A
CORE SIDE DIMENSIONS

SCALE 2:1



DETAIL B
SCALE 5:1

| | | | |
|--|------|---|-----|
| XXXXXX | | XX-XX-XX THRU XX-XX-XX (SPARES INCLUDED) | |
| HUSKY PROJECT | | ENGRAVING SEQUENCE | |
| MOLDING SURFACE ENGRAVING DATA: | | | |
| POSITION: | | AS SHOWN ON MOLDING SURFACE | |
| STYLE: | | ARIAL BOLD | |
| SIZE: | | 2.00 HIGH X 0.10 DEEP FOR 1 TO 5 CHARACTERS 1.50 HIGH X 0.10 DEEP FOR 6 TO 12 CHARACTERS | |
| MOLDING SURFACE FINISHES | | | |
| $\sqrt{\quad}$ | | $\sqrt{\quad}$ VAPOUR HONE AND BUFF | |
| $\sqrt{\quad}$ | | $\sqrt{\quad}$ 0.2 POLISH | |
| $\sqrt{\quad}$ | | $\sqrt{\quad}$ EDM | |
| $\sqrt{\quad}$ | | $\sqrt{\quad}$ 550 & 300 VAPOUR HONE | |
| $\sqrt{\quad}$ | | $\sqrt{\quad}$ EDM AND 550 & 300 VAPOUR HONE | |
| $\sqrt{\quad}$ | | $\sqrt{\quad}$ 0.4 GRIND OR HARD TURN | |
| PLEASE PRINT NAME | | | |
| CUSTOMER APPROVAL | | SIGNATURE | |
| DATE | | | |
| PURCHASER AGREES TO INDEMNIFY AND SAVE HUSKY, ITS AGENTS AND ALL EMPLOYEES HARMLESS FROM ANY AND ALL LOSSES, CLAIMS, ACTIONS, COSTS, EXPENSES, JUDGEMENTS, SUBROGATION, AND OTHER DAMAGES RESULTING FROM INJURY TO ANY PERSON (INCLUDING INJURY RESULTING IN DEATH) OR DAMAGE (INCLUDING LOSS OR DESTRUCTION) TO PROPERTY OF WHATEVER NATURE OF ANY PERSON ARISING OUT OF OR FROM THE USE OF THIS PRODUCT. | | | |
| PURCHASER ALSO AGREES TO INDEMNIFY HUSKY AGAINST ALL LIABILITY, COSTS, AND EXPENSES ARISING OUT OF CLAIMS THAT THIS CONTAINER DESIGN INFRINGES ANY PATENT. | | | |
| THIS PRODUCT DRAWING WAS PREPARED BY HUSKY, FOR INFORMATION SUPPLIED BY THE PURCHASER, FOR THE MANUFACTURE OF MOLDS AND/OR TOOLING AS ORDERED BY THIS PURCHASER. THIS DRAWING IS NOT TO BE RELEASED TO THIRD PARTIES WITHOUT THE EXPRESS WRITTEN PERMISSION OF THE PURCHASER. | | | |
| DIMENSIONS SHOWN ON THIS DRAWING ARE PLASTIC SIZES. | | | |
| ALLOWABLE DEVIATIONS ON UNTOLERANCED DIMENSIONS DIN 16901/REIHE 130 | | | |
| PRODUCT DATA | | | |
| ESTIMATED SHRINKAGE | | HUSKY STANDARD | |
| ESTIMATED PART WEIGHT | | 36.0 ± 0.4 gr (HUSKY EST) | |
| SPECIFIC GRAVITY | | 1.335 | |
| COMPONENT VOLUME | | X.X l | |
| ESTIMATED PART TOTAL AREA | | 19561 mm² (HUSKY EST) | |
| CUSTOMER DRAWING NO. | | BODY# THREAD# | |
| MATERIAL | | PET | |
| MOLD #: | | | |
| JOB #: | | | |
| PROJECT ENGINEER: R.KOCH | | | |
| HUSKY | | | |
| TITLE | | PREFORM PLASTIC SIZE | |
| SCALE AS SHOWN | SIZE | DRAWING | REV |
| SHEET 1 OF 1 | A1 | 3696409 | 0 |

| | | | |
|-----|------------|-------------------------------|--------------------------------|
| REV | DATE | DESCRIPTION | NAME |
| 0 | 2006-11-14 | ORIGINAL ISSUE - DESIGNED BY: | DRWN: M.GIWER CHKD: M.GIWER |